



DORA HOUSE

RESIDENTIAL DEVELOPMENT



ABOUT DORA HOUSE

DORA HOUSE is a luxurious two-unit, fully-detached duplex with a BQ, featuring five bedrooms. It is thoughtfully designed to offer smarter living in one of Lagos Mainland's most prestigious areas. This project provides residents with multi-functional spaces, enabling them to live with ease, maintain complete control, and align with their lifestyle.

DORA HOUSE also offers a scenic view of the vibrant estate, boasting a striking façade, natural finishes, and elegant terraces. It is exclusively crafted for high-net-worth VIPs who desire contemporary mansions in secure locations that they can own outright.

01



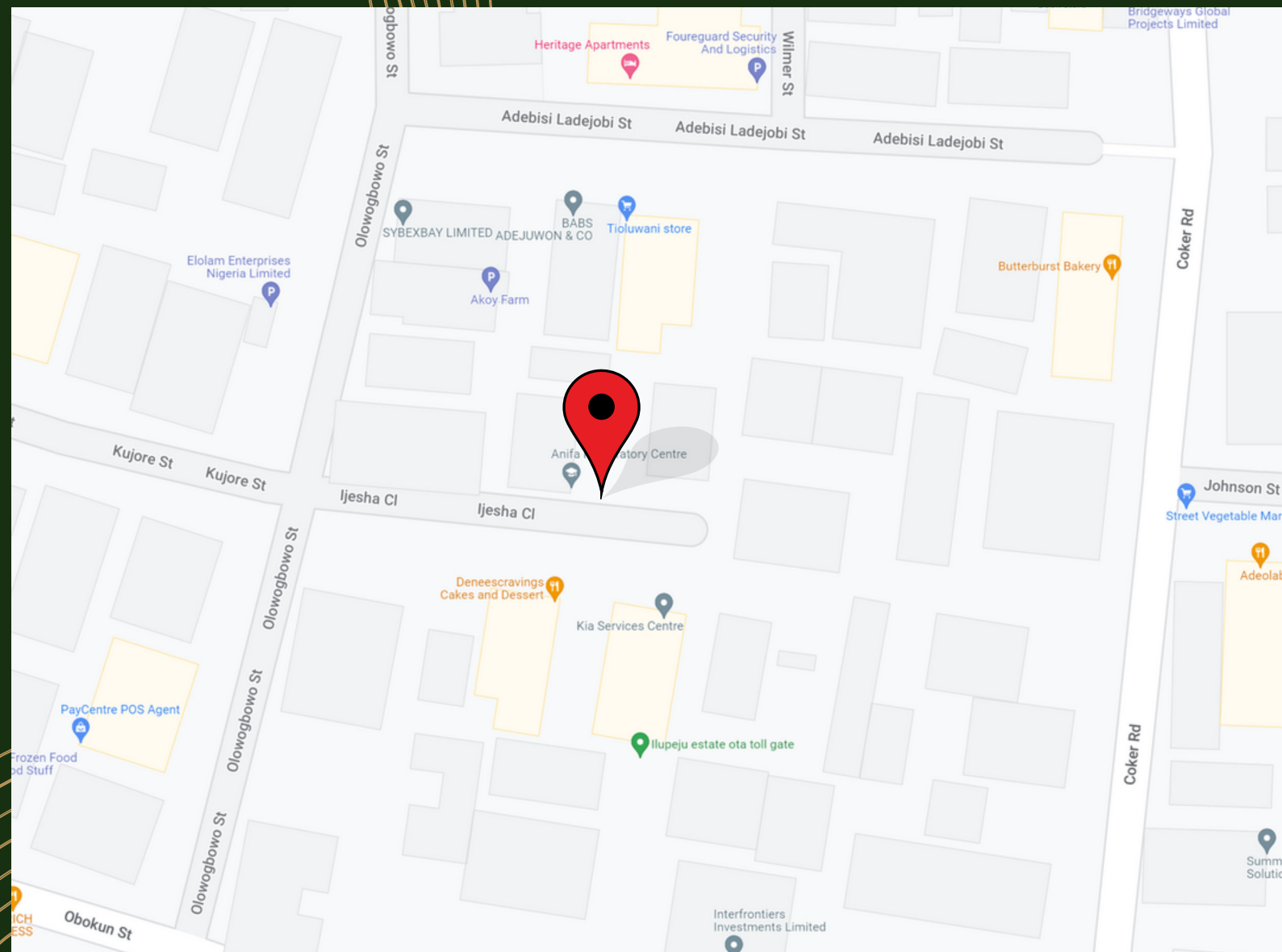
FEATURES

DORA HOUSE incorporates green and smart technologies while ensuring the inclusion of top-of-the-line luxury features. Alongside a healthy and tranquil environment, it boasts a well-planned design, natural landscapes, and other exceptional amenities, delivering a serene and sophisticated lifestyle tailored to your preferences and expectations.

Some of its key features include:

- One Primary Bedroom
- Three Secondary Bedrooms
- One Guest Bedroom
- One Bedroom BQ
- Ante Room
- Laundry Room
- Guest Toilet
- Dining Room
- Kitchen with pantry
- Private Lounge
- Fully Fitted Kitchen
- Ceramic Floor Finishes
- French Windows
- POP Ceiling Finish
- Electrical and Plumbing Fixtures
- Parking Lot
- Garden Area
- Gate House





LOCATION

The 2 units of Dora is developed on Ijesha Close, a serene neighborhood in Ilupeju, Lagos state.

03



GETTING AROUND

Ilupeju is one of the most popular destinations in Lagos sharing boundaries with cities like the capital city of Lagos, Ikeja and Onigbongbo, Oshodi, Obanikoro, Anthony through to Ikorodu and Oju-elegba with some equally popular streets such as Ilupeju Bypass, Coker Road, Town Planning Way, Ilupeju Industrial Avenue and many others.

SERENITY AND INDUSTRIALIZATION

Ilupeju is a choice location for residential apartments and commercial properties. It is very peaceful and hospitable. This explains why many multinational companies and expatriates like the Chinese and Indians have made Ilupeju their home.

EASY ACCESS

Ilupeju is situated in a central area and strategic location with good road networks. Many advanced parts of Lagos State– Victoria Island, Lagos-Abeokuta Expressway, Oshodi-Apapa Expressway, Yaba, Ikeja and others can easily be accessed through the town.

SCHOOLS, SHOPPING, LEISURE, HEALTH AND FITNESS

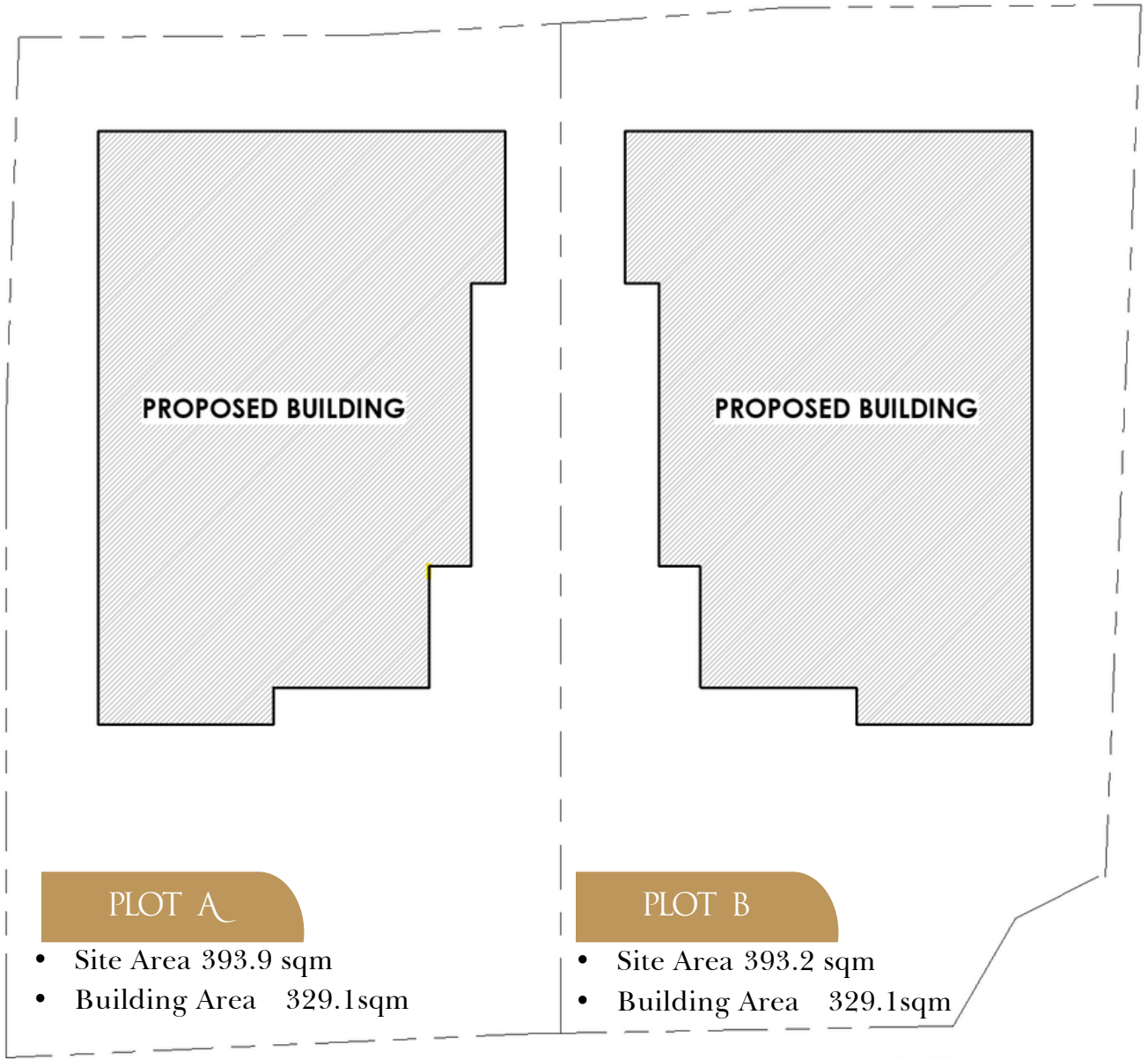
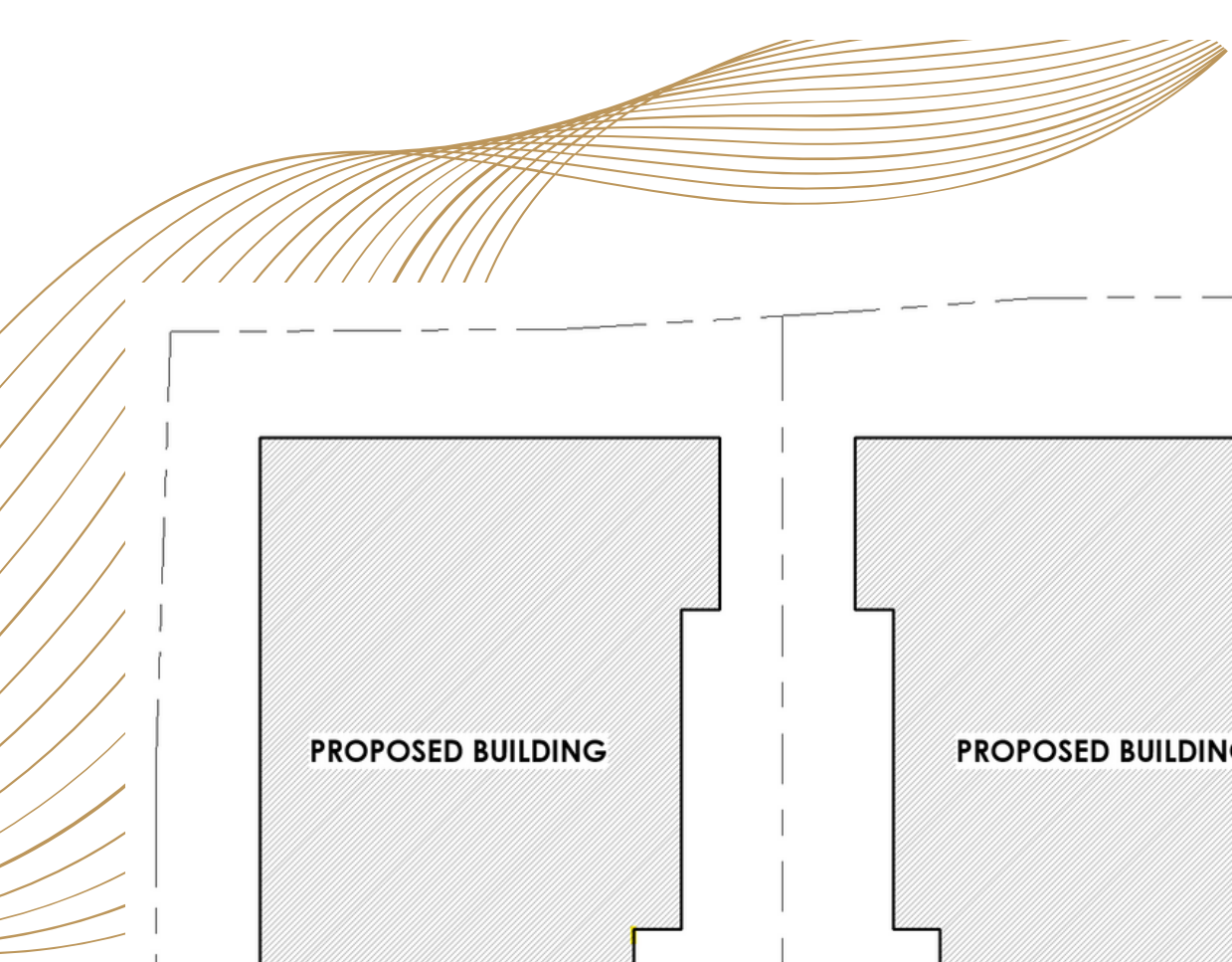
Ilupeju has countless facilities like the Indian School, recreational spots, modern markets, shops and malls such as Bazaar, Number 1 Supermarket, and Shoprite. It is also home to PZ Cussons recreational center, the National Open University Library, laundry shops, cool spots, restaurants and eateries such as the KFC, Sweet Sensations, Chicken Republic, and several others.





05





ACCESS ROAD

SITE PLAN (787.15sqm)





07





GROUND FLOOR PLAN

- ANTE-ROOM
- VISTORS TOILET
- LIVING ROOM
- DINING
- KITCHEN
- PANTRY
- LAUNDRY
- ENSUITE GUEST BEDROOM
- ENSUITEBOYS QUARTERS







FIRST FLOOR PLAN

- ENSUITE PRIMARY BEDROOM WITH CLOSET
- PRIVATE LOUNGE
- 3 SECONDARY ENSUITE BEDROOM





EXTERIOR VIEW



EXTERIOR VIEW





LIVING ROOM



DINING AREA





KITCHEN AREA



LAUNDRY AREA





BEDROOM



14





CLOSET

75





PAYMENT PLAN

Outright

Payment; ₦250,000,000

6 Months Plan

Initial Payment: ₦150,000,000

Monthly Installments: ₦22,000,000



INVESTMENT SECURITY

BANK GUARANTEE

Our finances are scrupulously managed by our banks, so your investment is safe, secured and your returns are guaranteed as and when due.

INDEPENDENT STRUCTURAL CONSULTANT

We work with highly qualified, certified, experienced and registered independent structural engineers, who have 100% project success, as consultants for perfect quality control.

CONSTRUCTION INSURANCE

Our projects are insured by a leading insurance company with full cover in case of force majeure.





Afrihood is a Pan African Real Estate and Infrastructure Development Company with a vision to raise the living standard of Africans one building at a time. We are rebuilding Africa to become the foremost and inclusive infrastructural wonder of the world.
